



## The Clearfield

### Description

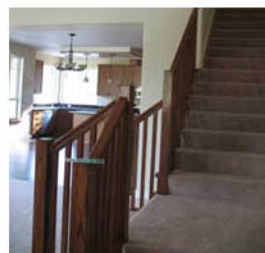
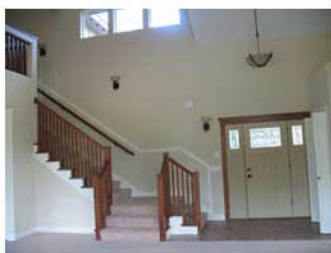
Arts and Crafts style meets hillside design. The result? A stunning design that perfectly fits a sloped site. Horizontal lap siding with stone and cedar shingle accents decorate the exterior. A covered porch introduces the front entry, but also allows access to a mudroom and the three-car garage beyond. A vaulted office, to the left as you enter, features built-ins and corner windows for ambient light. The great room is also vaulted and has a fireplace, media center and window seat in a corner window area a cozy place to read or relax. The nearby dining room has a recess for a hutch and double French doors opening to a wide deck. The service hall to the garage winds past a pantry, a laundry room, a half-bath and the mudroom, where there is storage space, a closet and a handy bench for removing boots and shoes. The upper level holds a family room, three bedrooms a shared bath with stackable washer and dryer and the master suite. A spa tub, shower with 2 shower heads and body sprayers, walk in closet, fireplace and a private deck appoint the master suite.

### Features

- \* Bedrooms: 4
- \* Baths: 2
- \* Half Baths: 1
- \* Parking/Garage: 3
- \* Square Feet: 2800+

### Interior

- \* Appliances
- \* Family Room
- \* Den/Office
- \* Dining Room
- \* Fireplace
- \* Hardwood Floors
- \* Forced Air
- \* Laundry Room
- \* Main Floor Bathroom
- \* Pantry
- \* Walk-In Closet



P.O. Box 4042  
2844 N. Arabian Lane  
Palmer, AK 99645

WM Construction, Inc  
Mike Thompson  
mike@buildingalaska.com

Office: 907-746-5107  
Fax: 907-746-7476  
Cell: 907-354-4947