



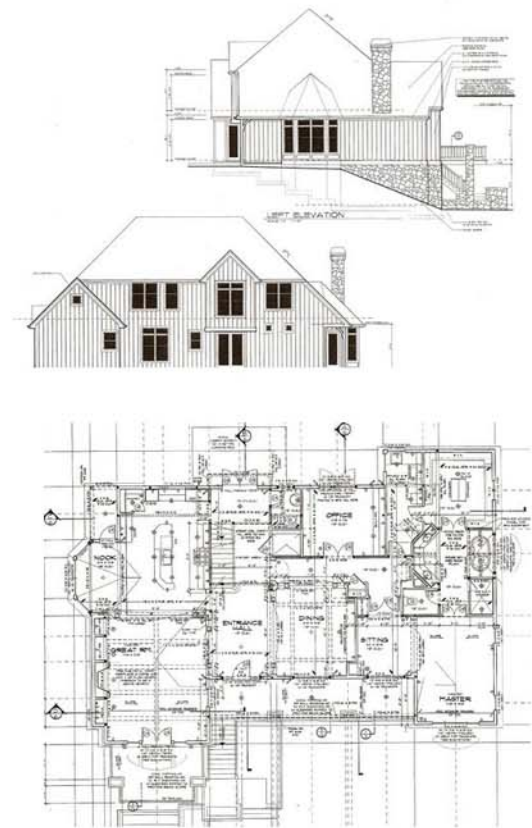
Goldstein

Description

Building on a sloping lot? This design is not only spacious and good-looking, but it fits a sloping site with no problem. The front entry and main level are raised from street level, allowing a lower level containing a three-car garage with large storage area, a wine cellar, and a game room with fireplace, built-ins, wet bar, half-bath, and covered patio at grade. The main level revolves around an elegant entrance hall. The vaulted great room is on the left; a formal dining room with exposed-beam ceiling is on the right. The kitchen and bayed breakfast nook are at the back, as is a home office. For convenience and privacy, the master suite is also on the main level. Be sure to notice the sitting area in the master salon, the huge walk-in closet, the well-appointed bath, and the nearby laundry room with built-in ironing board. A rear patio can be reached from a hallway off the kitchen, from a covered porch off the nook, and from the home office. The upper level holds three additional bedrooms (one with private bath) and bonus space for future development. An elevator has been included in this plan to make accessing all three levels easy.

Features

- * Bedrooms: 4
- * Baths: 3
- * Half Baths: 1
- * Parking/Garage: 3
- * Square Feet: 5,065



P.O. Box 4042
2844 N. Arabian Lane
Palmer, AK 99645

WM Construction, Inc
Mike Thompson
mike@buildingalaska.com

Office: 907-746-5107
Fax: 907-746-7476
Cell: 907-354-4947